



Anti-RFP Tag Mouse Monoclonal Antibody (9D1)

Cat #: ABT2120

Size: 50µl /200µl /200µl×5

Product Information

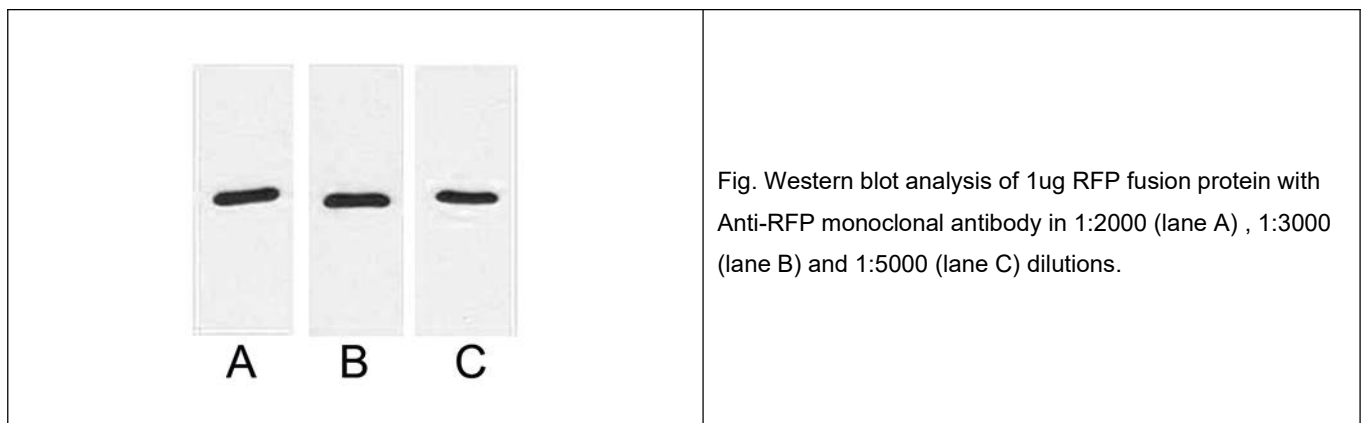
	Product Name: Anti-RFP Tag Mouse Monoclonal Antibody (9D1)		
	Applications: WB		Isotype: Mouse IgG
	Reactivity: All Species Expected		
REF	Catalog Number: ABT2120	LOT	Lot Number: Refer to product label
	Formulation: Liquid		Concentration: 1 mg/ml
	Storage: Store at -20°C. Avoid repeated freeze / thaw cycles.		Note: Contain sodium azide.

Background: RFP (Red Fluorescent Protein), cloned from *Discosoma* coral (DsRed, DsRed2 or drFP583), is a protein which exhibits bright red fluorescence when exposed to blue light. It is common research practice for biologists to introduce a gene (or a gene chimera) encoding an engineered fluorescent protein into living cells and subsequently visualize the location and dynamics of the gene product using fluorescence microscopy.

Application Notes: Optimal working dilutions should be determined experimentally by the investigator. Suggested starting dilutions are as follows: WB (1:5000).

Storage Buffer: Liquid in PBS, pH 7.4, containing 0.02% Sodium Azide as preservative and 50% Glycerol.

Storage Instructions: Stable for one year at -20°C from date of shipment. For maximum recovery of product, centrifuge the original vial after thawing and prior to removing the cap. Aliquot to avoid repeated freezing and thawing.



Note: The product listed herein is for research use only and is not intended for use in human or clinical diagnosis. Suggested applications of our products are not recommendations to use our products in violation of any patent or as a license. We cannot be responsible for patent infringements or other violations that may occur with the use of this product.